

# ANNA

## COMMUNITY PROFILE & RESOURCE GUIDE



### CITY OF ANNA INFORMATION

UTILITY BILLING,  
PERMITTING,  
PUBLIC SAFETY



### ECONOMIC DEVELOPMENT

PARKS,  
RECREATION,  
TRAILS



### COMMUNITY PARTNERS

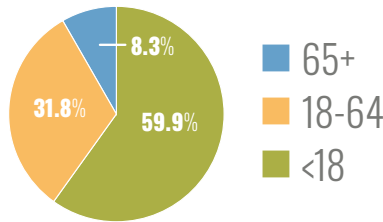
SCHOOLS,  
SERVICE ORGANIZATIONS,  
NON-PROFITS



# ANNA, TEXAS

by the numbers

**POPULATION:**  
 2010 Census Population: 8,249  
 2020 Population Est: 15,010



| AT-A-GLANCE               | ANNA     | PRIMARY TRADE AREA | COLLIN COUNTY |
|---------------------------|----------|--------------------|---------------|
| Population                | 16,721   | 109,426            | 1,092,478     |
| Median Age                | 32       | 37                 | 36.2          |
| Median Household Income   | \$81,734 | \$72,976           | \$99,061      |
| Bachelor Degree or Higher | 32.4%    | 25.1%              | 53.5%         |

Source: ESRI

## HOUSING



**ZIP CODE: 75409**

**Median Home Value:**  
 \$221,701 (source: ESRI)  
**Median New Home Price:**  
 \$294,599  
**Average Household Size:**  
 3.13 (source: ESRI)  
**Housing Starts Since 2014:**  
 2,738 (source: City of Anna)

**Average Household Income:** \$92,641  
**Average Home Value:** \$245,275

## EDUCATIONAL ATTAINMENT:

**Bachelors/Professional** 32.4%  
**Some College/Associates** 29.3%  
**High School Graduate/GED** 26.9%  
**No Diploma** 11.5%

Source: ESRI

## TOP INDUSTRIES:

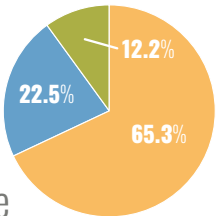
**Services** 45.7%  
**Retail Trade** 12.6%  
**Finance / Insurance / Real Estate** 9.0%  
**Transportation / Utilities** 8.7%  
**Construction** 8.3%

Source: ESRI

## BUSINESS / EMPLOYMENT

Source: ESRI

**223 businesses**  
**2,498 total employees**  
**7,405 workers age 16+**  
**6.9% unemployment rate**



White Collar Blue Collar Services

## ANNA, TEXAS COMMUNITY PROFILE & RESOURCE GUIDE

# OPPORTUNITY ANNA TX

The sixth fastest growing city in North Texas



## WELCOME NEIGHBORS TO ANNA TEXAS

A note from Mayor Nate Pike:

“On behalf of the city of Anna, it gives me great pleasure to welcome you to our community. You will find a group of caring neighbors who have an appreciation of the city’s history and a strong passion for the future.

As one of the fastest growing cities in North Texas, Anna is positioned

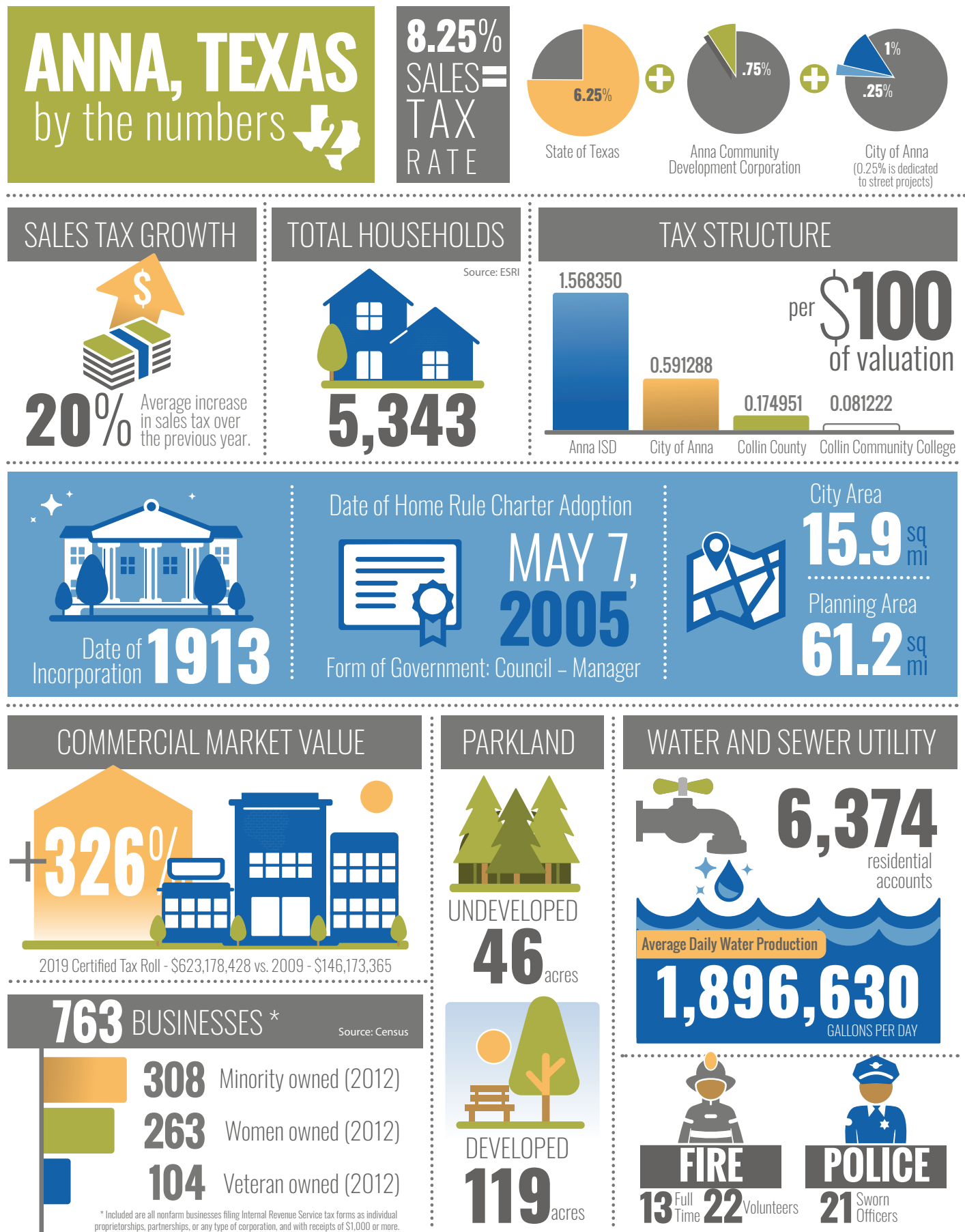


for many exciting things over the coming years and we are glad that you are a part of it. I want to encourage you to get involved in your city, whether that is on an HOA Board or volunteering for a city board or commission— together we can achieve great things and make Anna the premier community in Collin County!”

## CONTENTS

- Demographics ..... Left, 2
- History ..... 3
- Service & Utilities ..... 4
- Permits & Planning ..... 5
- Parks & Recreation ..... 6
- Economic Development ..... 7
- Community Partners ..... 8
- Education ..... 9-11
- Public Safety ..... 12
- Maps ..... 13-15





## CITY HISTORY & FUTURE

more than just a railroad town

Anna was incorporated in 1913, but the town sprang to life in the mid 1800's with the arrival of pioneers staking their claim to a better life along the railroad and the Texas high plains. Collin McKinney settled within a few miles of the future town site in 1846, John F. Greer, who arrived in 1867, is credited with building the first home and store in what is known as Anna today. The Houston and Texas Central Railway, between Dallas and Denison, passed through the area in 1873. By the time Anna was platted in 1883, it had a population of twenty, two stores, a steam gristmill, and a Baptist church. A post office also opened in that year. By 1890 the town had a population between 100 and 200. Anna was incorporated in 1913, with Greer as the first mayor. In the mid-1980s Anna had 855 residents and several businesses and a strong sense of community that is still alive today.

### Historical Landmarks and Figures:

- Coffman Cemetary
- First Christian Church of Anna
- Sherley Store and Museum
- Dr. William Throckmorton
- Governor James Webb
- Throckmorton
- Collin McKinney Homestead
- Rosamond Baptist Church
- Public Education

### 2035 Vision

Anna is a community of families that is safe and beautiful. Anna has a vibrant downtown, great housing opportunities, and a dynamic business community. Anna is a fun community for all and has convenient mobility options. The premier community in Collin County!

### City Strategic Plan Goals

- Growing Anna economy
- Sustainable Anna community through planned, managed growth
- Anna – A great place to live
- High-performing, professional city





# SERVICE & UTILITIES



### Water

Complete a new utility service application, pay your utility bill, and view water rates and your water usage online at [annatexas.gov](http://annatexas.gov), over the phone at 972-924-2432, or in person at 101 S. Powell Parkway.



### Trash [\(collection map\)](#)

Place the ORANGE-top 96 gal. polycart curbside & away from the mailbox by 7 a.m. on your collection day. Anything outside the container will NOT be collected.

### Bulky Item Service

Bulky items consist of non-recyclable items such as mattresses, couches, chairs and tables too large to fit in the poly-cart. CARDS Recycling will provide a bulky item pick-up service that will be occurring every week on your regular scheduled day. Please call CARDS Recycling at 877-592-2737 if you have a question regarding this service. Residents are allowed one bulky item per week.



### Recycling [\(collection map\)](#)

Place the GRAY-top 64 gal. polycart curbside and away from the mailbox by 7 a.m. on your collection day. All recycling must fit within the polycart provided & must not be bagged. Recycling items include: paper products, clean plastic (1-7), rinsed tin and aluminum cans, flattened cardboard, and clean glass bottles and jars. Please NO BAGS.



### Electricity

#### Oncor (TXU)

800-242-9113 / [www.oncor.com](http://www.oncor.com)

#### Grayson/Collin Electric (GCEC)

903-482-5231 / [www.gcec.net](http://www.gcec.net)

#### Texas Electric Choice / Power to Choose

866-797-4839 / [www.powertochoose.org](http://www.powertochoose.org)



### Natural gas

#### Atmos Energy

888-286-6700 / [www.atmosenergy.com](http://www.atmosenergy.com)



### Cable, Internet, Telephone

#### Suddenlink

877-423-2743 / [www.suddenlink.com](http://www.suddenlink.com)

#### AT&T

866-921-4482 / [www.att.com](http://www.att.com)

# PLANNING & PERMITTING

### Building Permits

Permits are required for most construction or remodeling projects, in order to ensure the safety of the work and its compliance with building, construction, and zoning codes. Building permits are mandated by the City of Anna and the International Building, Fire, Mechanical, Plumbing, and National Electrical Codes. Please contact the Building Division of the Development Services Department to find out if you need a permit. Even if a permit is not needed, a representative will answer code questions and may provide valuable advise.

📞: 972-924-2616

✉ [permits@annatexas.gov](mailto:permits@annatexas.gov)

📍 3223 N. Powell Pkwy

🌐 [annatexas.gov/1115/Building-Department](http://annatexas.gov/1115/Building-Department)

### Code Compliance

The Code Compliance Department is responsible for addressing:

- High Weeds
- Trash and Debris
- Junk Motor Vehicles
- Fences
- Home Based Businesses
- Unsecured Structures (Including Swimming Pools, Etc.)
- Illegal signs

**MISSION:** To protect the integrity of Anna's neighborhoods by protecting the health, safety, and welfare of the community.

📞: 214-504-5587 or 972-924-3325

✉ [kmartin@annatexas.gov](mailto:kmartin@annatexas.gov)

### Rental Registration

The purpose of the Rental Housing ordinance is to promote greater compliance with health and safety standards and to preserve the quality of Anna's neighborhoods and available housing stock. All residential rental properties including single-family homes, duplexes, apartments, and mobile home parks are required to register their properties, annually.

📞: 214-504-5587

✉ [kmartin@annatexas.gov](mailto:kmartin@annatexas.gov)

📍 101 S. Powell Pkwy, Anna, TX 75409

🌐 [annatexas.gov/1146/Rental-Registration-Program](http://annatexas.gov/1146/Rental-Registration-Program)

### Planning & Development

The Planning Division of the Development Services Department is responsible for the orderly development of the City and the administration of various land use regulations, including the Zoning Ordinance, Subdivision Ordinance, Signage and Landscaping regulations. The Planning Division is also responsible for monitoring and enforcing the Anna Comprehensive Plan which is a policy document designed to guide the future actions of the community. The division also provides technical assistance and staff support to the Planning and Zoning Commission.

📞: 972-924-2616

✉ [Imecke@annatexas.gov](mailto:Imecke@annatexas.gov) / [odemings@annatexas.gov](mailto:odemings@annatexas.gov)

📍 3223 N. Powell Pkwy

🌐 [annatexas.gov/478/Planning-Development](http://annatexas.gov/478/Planning-Development)





# PARKS & RECREATION

## Slayter Creek Park

- Four lighted baseball fields
- Two tennis courts
- Two basketball goals
- Two multi-purpose athletic fields
- Skateboard park
- Splash pad (seasonal)
- Trails
- Disc golf
- Pavilion \*
- Gazebo \*

## Sherley Heritage Park

- Playground
- Pavilion
- Annual Christmas Tree Lighting event
- Restored Train Depot

## Natural Springs Park

- Natural spring that feeds a small man-made pond
- Paw Park for Dogs
- Trails
- Gazebo \*

## Johnson Park

- Two softball fields \*
- Playground

## Lakeview Park

- Trails
- Pavilion
- Playground
- Lake

## Geer Park

- Baseball / softball
- Backstops for practice fields \*

## Bryant Park

- Undeveloped, but available for use \*
- Trails

\* contact the city's parks and recreation department to make a reservation at 469-734-6767 or email [jwatson@annatexas.gov](mailto:jwatson@annatexas.gov)



## Annual Community Events

**Independence Day Fireworks**  
*Evening of July 4th*

**Anna Harvest Fest**  
*Last Saturday in October*

**Christmas Parade**  
*2nd Saturday in December*

# ECONOMIC DEVELOPMENT

## Community Development Corporation and Economic Development Corporation

In the late 1990s, Anna neighbors voted to provide a ½ cent sales tax to the Community Development Corporation (CDC) and a ½ cent to the Economic Development Corporation (EDC). The other 1 cent went to the City's General Fund. In 2016, voters approved a measure to increase the CDC's portion to ¾ cent and remove the EDC portion. The remaining 1¼ cent goes to the City's General Fund. The CDC utilizes these funds to promote economic development including business recruitment, retention and expansion and serves as an information clearinghouse for brokers, developers and business prospects.

The EDC/CDC provided incentives for much of the retail development that has occurred including Brookshire's, McDonalds, and the Anna Town Center that includes Walmart, Starbucks, Salsa Tex Mex, Chick-fil-a, Whataburger, Freestanding ER, and more coming soon. The EDC/CDC also purchased the 85-acre Anna Business Park at State Highway 5/Collin County Outer Loop, and provided bonds for improvements to Slayter Creek Park. The CDC/EDC is governed by a seven-member Board that meets on the first Thursday of each month.



## Incentives

When you decide to locate, expand, or keep your business in Anna, you will discover a wide variety of potential economic development incentives including infrastructure assistance, downtown redevelopment grants, sales tax rebates, property tax rebates, triple freeport exemption, city fee waivers/ reductions, and jobs grants. Economic incentives are negotiated on case-by-case basis subject to number of jobs, average wages, type of project, impact on the community, and capital investment. Any business that receives an incentive is required to enter into a performance agreement and meet certain requirements and criteria. For anyone interested in potential incentives, please contact the EDC/CDC office for an application.

## ECONOMIC DEVELOPMENT STAFF

**Joey Grisham**  
📞: 214-831-5394  
✉ [joey@opportunityannatx.com](mailto:joey@opportunityannatx.com)  
**Taylor Lough**  
📞: 214-831-5321  
✉ [taylor@opportunityannatx.com](mailto:taylor@opportunityannatx.com)  
🌐 [opportunityannatx.com](http://opportunityannatx.com)





# COMMUNITY PARTNERS

## Greater Anna Chamber of Commerce

**Mission:** The Greater Anna Chamber of Commerce, which serves the Anna, Texas area, advocates and represents business interests and issues affecting the community. We provide the environment to help our members prosper and succeed, through a proactive working partnership with all levels of government and community organizations, to achieve a healthy local economy and quality of life.



**Benefits of Membership:** Chamber members enjoy exposure opportunities, access to information that impacts their businesses, and abundant opportunities to develop professional relationships throughout the Anna Area.

**Events:** The Greater Anna Chamber holds an annual awards banquet in February, golf tournament in May, and plans and hosts the annual July 4th Fireworks, Harvest Fest, and Christmas parade. In addition, the Chamber hosts monthly networking events, candidate forum during local elections, and holds an Ambassador program for those wanting to volunteer.

### Chamber Growth:

2008 – 45 Members  
2011 – 75 Members  
2015 – 140 Members  
2019 – 280 Members

📍 312 N. Powell Pkwy, Anna, TX 75049  
📞 (972) 924-8533  
✉ info@GreaterAnnaChamber.com  
🌐 GreaterAnnaChamber.com  
📘 facebook.com/greaterannachamber  
🐦 twitter.com/annachamber  
🌐 linkedin.com/company/annachamber

## Anna Area Historical Society

Established in 2004, the AAHPS is a non-profit organization dedicated to the preservation of the historical, cultural, ethnic, and artistic places, things, and events in Anna and the surrounding area. Their most recent project was the restoration of the Anna



Train Depot which is located in Sherley Heritage Park. In 2019 the AAHPS members published a book called “The Spark that Ignited the Town of Anna” which is a collection of stories and pictures of early Anna. AAHPS meets the last Thursday of each month from 1:30pm- 3pm at First Christian Church of Anna, 101 S. Sherley Rd

📞 (469) 982-6396  
🌐 aahps.org  
✉ aahpsdepot@gmail.com

## Collin County Adventure Camp - YMCA

Adventure Camp opened its gates in 2006 with a dream to bring the outdoor learning experience to children of Collin County and the surrounding area. Residents passed a \$26 million bond to build the camp. When construction was complete, Collin County partnered with the YMCA of Metropolitan Dallas to manage it. Outdoor Education includes 10 weeks of Summer Camp programs and year-round Group Retreats. In all our programs, the camp models the four YMCA core values: Honesty, Caring, Respect and Responsibility



🌐 collincountyadventurecamp.org

## Hurricane Creek Rotary Club (1833)

This non-profit organization represents professional from Anna, Van Alstyne and Howe who want to make positive changes in the community and world. Members are dedicated people who share a passion for service in the community, workplace, and around the globe. Events include a Bingo fundraiser in January for local high school graduates and National Night Out in October. Hurricane Creek Rotary Club meets every Thursday from 12pm-1pm at Hurricane Creek Country Club, 1800 Fairway Lane.



🌐 rotary5810.org/clubinfo/hurricane-creek

## Anna Youth Sports Association

ASG is a non-profit organization governed and coached by volunteers and volunteer board of directors.

🌐 annasportsgroup.org



# HIGHER EDUCATION

## The University of Texas at Dallas

The University of Texas at Dallas is a rising research powerhouse with eight schools and more than 140 academic degrees including top-ranked programs in business, engineering, science, audiology and arts and technology. The campus community is enriched by a commitment to the arts, service learning opportunities and an athletics program with new esports teams. UTD students, faculty, staff and alumni continue to rise to new challenges, proving that Comets shine bright.

🌐 utdallas.edu



## University of North Texas

As one of the nation’s largest universities, we offer 106 bachelor’s, 88 master’s and 36 doctoral degree programs. By providing access, welcoming diversity and strengthening our collaborations with our many educational, business and community partners, as well as building new partnerships across the globe, UNT’s faculty and staff work each day to prepare students for the challenges they will meet in our changing world.

🌐 unt.edu



## University of Texas at Arlington

Founded in 1895, The University of Texas at Arlington is a Carnegie Research 1 institution with more than 100 years of academic excellence and tradition. As the largest university in North Texas and second largest in The University of Texas System, UTA is located in the heart of Dallas-Fort Worth, challenging our students to engage with the world around them in ways that make a measurable impact. UTA offers state-of-the-art facilities that encourage students to be critical thinkers. Through academic, internship, and research programs, our students receive real-world experiences that help them contribute to their community and, ultimately, the world.

🌐 uta.edu



## Collin College

Since offering its first classes at area high schools in 1985, Collin College has expanded to serve more than 59,000 credit and continuing education students each year. The only public college based in the county, the college offers more than 100 degrees and certificates in a wide range of disciplines, including new Bachelor of Science in Nursing (BSN) and Bachelor of Applied Technology (BAT) in Cybersecurity degrees.

🌐 collin.edu





# ANNA INDEPENDENT SCHOOL DISTRICT

## 4A DISTRICT WITH SIX CAMPUSES:

- ANNA EDUCATION CENTER ..... (PRE-K & 6)
- JOE K. BRYANT ELEMENTARY ..... (K-5)
- JUDITH L. HARLOW ELEMENTARY ..... (K-5)
- SUE E. RATTAN ELEMENTARY ..... (K-5)
- ANNA MIDDLE SCHOOL ..... (7-8)
- ANNA HIGH SCHOOL ..... (9-12)

Anna ISD offers a small-town atmosphere with a progressive educational system. We pride ourselves in creating a family environment for our students and staff. This positive staff morale is contagious throughout the community of Anna. Anna ISD is approximately 64 square miles, with a current enrollment at over 3,800 students. **Some of AISD’s unique opportunities include:**

- Focus on student character
- Classrooms integrating cutting-edge technology
- State-of-the-art Makerspace
- Vast offerings of Dual Credit, CTE Courses, and Certifications
- Extracurricular & leadership activities such as BETA Club, Robotics, Student Council, FCA, FFA, UIL Academic Competitions and Cheerleading
- YMCA Afterschool, Holiday and Summer Programs (K-5)
- Athletic Programs including: Baseball, Softball, Basketball, Cross Country, Football, Powerlifting, Soccer, Tennis, Track & Field, Golf, and Wrestling
- Award-winning Fine Arts Programs – including Band, Art and Theatre



Anna Scholarship Foundation was established in 2001. An initial scholarship of \$400 was awarded to a 2002 Anna graduate. Operated by a group of professional individuals who donate their time and talents, the foundation awarded four \$1,500 scholarships to 2017 graduates and \$21,000 to ten previous graduates. Currently, over 80% of our scholarship recipients either have graduated with their post-secondary degree or they are still working to reach this goal. In 2007, the foundation was granted a full tax exemption by the IRS as a public charity in a 501(c)(3) exempt organization.

With expectations to grow 10% each year for the next several years, we are excited to offer more options to our current programs!

📞: (972) 924-3202  
✉ info@annascholarships.org  
🌐: annascholarships.org







Established in 2005, the department is currently organized into the Operations and Support Services Divisions and includes 22 sworn officers, one narcotics K-9, civilian records administrator, and part-time clerk. Dispatched by Collin County, the department responded to approximately 13,000 calls for service in 2019.

 972-924-2848  
 101 S. Powell Pkwy.  
 [annatexas.gov/police](http://annatexas.gov/police)

Established as a volunteer department in 1939 and absorbed by the City in 2010, the Anna Fire Department currently operates a single engine company with 4 firefighters/paramedics. Organized into three divisions: Operations, Prevention, and Emergency Management, department includes 12 fulltime firefighter/paramedics, 2 Chief Fire Officers, and 1 Fire Prevention Captain. Dispatched by Collin County, the department ran 1,817 calls in 2019. EMS transport is provided by AMR.

📞 972-924-2143  
📍 305 S. Powell Pkwy.  
🌐 [annatexas.gov/fire](http://annatexas.gov/fire)

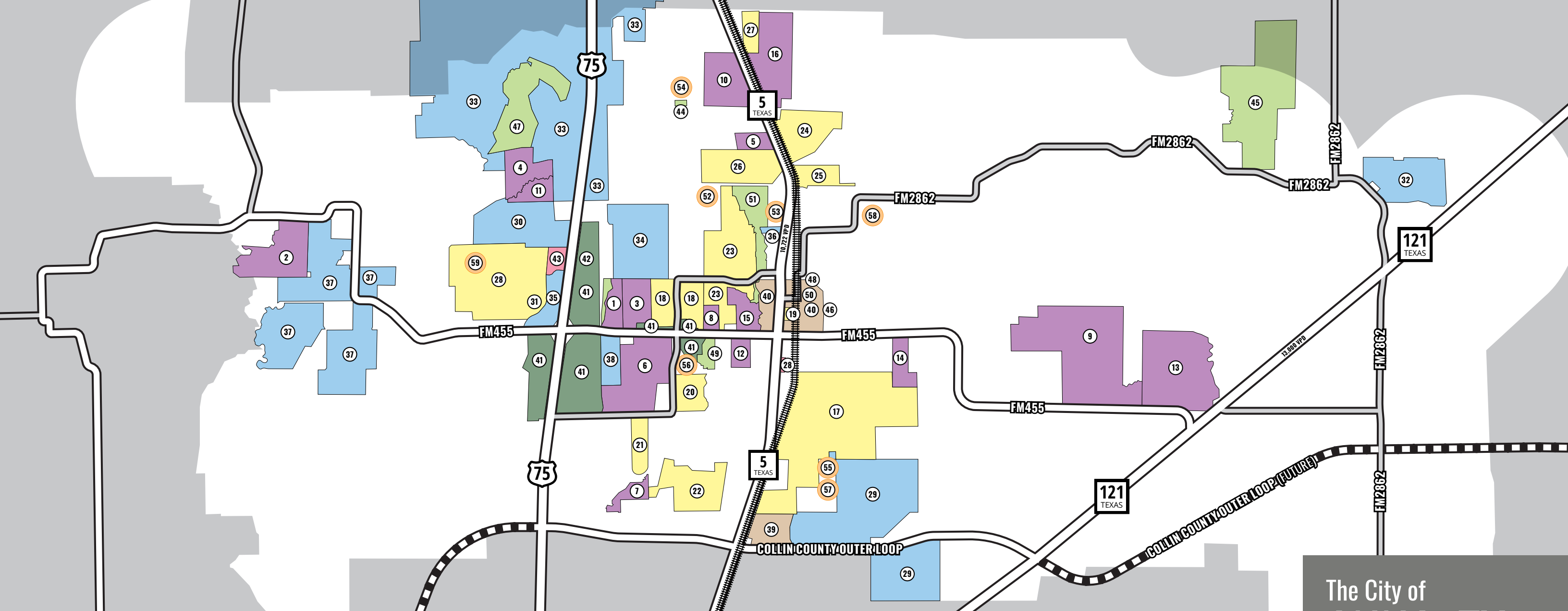
📞: 972-924-3325  
📍 101 S. Powell Pkwy.

: [collincountytx.gov/animal\\_services](http://collincountytx.gov/animal_services)



- 5 major highways intersect near Anna
- 15 min to McKinney National Airport
- 45 min to DFW International Airport and Downtown Dallas





### Existing Development

1. Creekside ..... 230 Lots
2. East Fork Estates ..... 144.3 Acres
3. The Falls ..... 316 Lots
4. Hurricane Creek ..... 50 Lots
5. Meadow Ridge Estates ..... 151 Lots
6. Oak Hollow Estates ..... 965 Lots
7. Pecan Grove (Phase 1) ..... 173 Lots
8. Settler's Way ..... 104 Lots
9. Sheffield Farms ..... 74 Lots
10. Tara Farms ..... 363 Lots
11. Urban Crossing ..... 31 Lots
12. Westfield ..... 141 Lots
13. Wild Rose ..... 24 Lots
14. Wildwood ..... 47 Lots
15. Willow Creek ..... 224 Lots
16. North Pointe Crossing ..... 934 Lots

### Active Development

17. Anna Town Square ..... 1,915 Lots
18. Avery Pointe ..... 554 Lots
19. Future City Hall
20. Lakeview Estates ..... 226 Lots
21. Park Place ..... 150 Lots
22. Pecan Grove (Phase 2-4) ..... 473 Lots
23. West Crossing ..... 1,447 Lots
24. Camden Parc ..... 452 Lots
25. Sweetwater Crossing ..... 192 Lots
26. Shadow Bend ..... 220 Lots
27. Green Meadows ..... 121 Lots
28. Villages of Hurricane Creek ..... 654 Lots

### Planned Development

29. Anna Ranch ..... 651.7 Acres
30. Vlgs. of Hurricane Creek North ..... 883 Lots
31. Future Fire Station
32. G2 Motorsports Park
33. Mantua ..... 771 Acres
34. Meadow Vista ..... 161.2 Acres
35. Multi-Family/Retail
36. North Park ..... 32 Lots
37. Oak Ridge ..... 800 Acres
38. Villages of Water's Creek ..... 65.4 Acres

### Business Center

39. Anna Business Park
40. Downtown Anna

### Retail Development

41. Retail

### Medical

42. E.R. at Anna
43. Surgery Center of North Texas

### Parks

44. Bryant Park
45. Colin County Adventure Camp
46. Geer Park
47. Hurricane Creek Country Club
48. Johnson Park
49. Natural Springs Park
50. Sherley Park
51. Slayer Creek Park

### Schools

52. Anna High School
53. Anna Middle School
54. Bryant Elementary School
55. Judith Harlow Elementary School
56. Rattan Elementary School
57. Future Middle School
58. Future Elementary School
59. Future Elementary School

## The City of ANNA, TX

PLANNING BOUNDARIES:

61.2 sq mi

PROJECTED BUILD-OUT  
POPULATION:

250,000





# CONTACT INFORMATION



📍 312 N. POWELL PARKWAY  
📞 214-831-5394  
🌐 OPPORTUNITYANNATX.COM

📍 312 N. POWELL PARKWAY  
📞 972-924-8533  
🌐 GREATERANNACHAMBER.COM

📍 111 N. POWELL PARKWAY  
📞 972-924-3325  
🌐 ANNATEXAS.GOV

📍 501 S. SHIRLEY AVENUE  
📞 972-924-1000  
🌐 ANNAISD.ORG

Visit us online at [OPPORTUNITYANNATX.COM](http://OPPORTUNITYANNATX.COM)